

INDUSTRIAL • MANUFACTURING • HVAC • SPECIALTY

Cedar Rapids • Quad Cities
www.climate-engr.com

TABLE OF CONTENTS

OUR SERVICES

COMPANY OVERVIEW

- Sales & Workforce Volume
- History

SAFETY

- Safety Practices
- Safety Awards

FACILITIES

- Cedar Rapids
- Quad Cities

CAPABILITIES

- Equipment
 - Industrial
 - HVAC
- Technology
- Welds & Materials
- Specialty Materials
- Painting
- Trucking Fleet

OUR WORK

- Industrial
- Manufacturing
- HVAC
- Specialty
- Architectural



OUR SERVICES

- Industrial Ventilation & Fabrication
- Commercial HVAC Systems & Fabrication
- Manufacturing Fabrication
- Specialty Fabrication
- Plant Maintenance
- Architectural Metals & Panels
- HVAC Service

COMPANY OVERVIEW

Established in 1947, Climate Engineers has developed a reputation for providing high-quality custom sheet metal fabrications. We have served the commercial and industrial markets for more than 70 years, providing timely delivery of the ventilation/HVAC, ingredient, and material handling systems required by food, ethanol, and other processing plants.

With locations in Cedar Rapids and near the Quad Cities, we can efficiently serve manufacturing and industrial firms throughout the United States.

EXPEDITING INSTALLATIONS

Climate Engineers excels at providing commercial, manufacturing, and industrial sheet metal solutions that meet the timelines and precise specifications required by the client. Project managers, expert CAD operators, and experienced field foremen work together with advanced equipment to provide a precise, safe, and quick solution. Clients avoid costly production delays because of Climate's coordinated effort at all levels.

INDUSTRIAL FABRICATION CAPACITY

A number of our customers have worked with us for many years due to our ability to facilitate short shutdown periods. Our responsiveness comes as a result of a large, experienced, and dedicated team. We also stock popular materials in order to meet immediate demands.

SAFETY SPECIALISTS

A priority on safety is critical to the successful execution of commercial and industrial projects. Numerous organizations have recognized Climate Engineers for maintaining excellence in safety and health. Safety and quality are preeminent concerns shared by all employees. These details are monitored by an employee safety committee, which also facilitates the implementation of new programs and training courses.

FLEXIBLE & DEDICATED STAFF

The Cedar Rapids and Quad Cities locations offer flexible shifts and facilities to ensure the ability to complete multiple large-scale projects simultaneously. We are proud of our company's ability to respond quickly to any client request and increase capacity as required. Our computer-aided estimating and CAD staff work together to minimize turnaround and anticipate issues that can arise on demanding industrial projects.

SALES & WORK FORCE VOLUME

SALES VOLUME

2025	2024	2023	2022	2021
\$53M+	\$52M	\$45M	\$40M	\$37.5M

WORK FORCE VOLUME

160 Employees (average over the past 5 years)

Office Personnel: 30	CAD Department: 10
Shop Employees: 45	Service Department: 10
Field Employees: 70	

SHIFTS

Capable of 2- or 3-shift operation

SAFETY PRACTICES



Climate Engineers has an active Safety Committee that includes representatives from management, shop and field. The Committee holds monthly meetings and conducts job site inspections to ensure a safe work environment for all employees.



The superintendent (or the designated coordinator) holds weekly Tool Box Talks for the entire crew. This aids in:

- Identifying hazards and unsafe work practices
- Removing obstacles for incident prevention
- Helping the company evaluate the accident and illness prevention program



On projects with crews of six or more, the superintendent designates a safety coordinator to oversee daily safety issues.



Climate Engineers' EMR history is available upon request



An annual Safety Celebration is held each summer to celebrate and recognize employee dedication to safety. During this celebration, we hold training sessions on various topics each year.

SAFETY AWARDS



2024

- Illowa Safety Award for Outstanding Safety Record
Presented by IMPACT Illowa Construction
Labor and Management Council
- Certificate of Achievement for Total OSHA
Recordable Rates below the Industry Average
Presented by Millennium Insurance Co., Ltd.



2023

- Award of Honor - Outstanding Safety
Performance for Small Member Category
Presented by Millennium Insurance Co., Ltd.
- Illowa Safety Award for Outstanding Safety Record
Presented by IMPACT Illowa Construction
Labor and Management Council
- Certificate of Achievement for Total OSHA
Recordable Rates below the Industry Average
Presented by Millennium Insurance Co., Ltd.



2022

- SMACNA Safety Excellence Award
- Illowa Safety Award for Outstanding Safety Record
Presented by IMPACT Illowa Construction
Labor and Management Council
- Award of Honor - Outstanding Safety
Performance for Small Member Category
Presented by Millennium Insurance Co., Ltd.
- Certificate of Achievement for Total OSHA
Recordable Rates below the Industry Average



2021

- SMACNA Safety Excellence Awards
1st Place - 200,000/300,000 man-hour category
- Illowa Safety Award for Outstanding Safety Record
Presented by IMPACT Illowa Construction
Labor and Management Council
- Certificate of Achievement for Total OSHA
Recordable Rates below the Industry Average
Presented by Millennium Insurance Co., Ltd.



2020

- SMACNA Safety Excellence Awards
1st Place - 200,000/300,000 man-hour category
- Illowa Safety Award for Outstanding Safety Record
Presented by IMPACT Illowa Construction
Labor and Management Council
- Award of Excellence - Outstanding Safety
Performance for Small Member Category
Presented by Millennium Insurance Co., Ltd.
- Certificate of Achievement for Total OSHA
Recordable Rates below the Industry Average

OUR GOAL IS **ZERO** INJURIES IN THE WORKPLACE

CAPABILITIES

INDUSTRIAL

ROLL FORMING

(1) 10' x 7/8" Plate Roll
(1) 8' x 1/2" Plate Roll
(2) 6' x 1/2" Plate Roll
(2) 6' x 1/4" Plate Roll
(2) 3' x 1/8" Plate Roll
(2) 6' x 14 GA Roll

PRESS BRAKES

(1) Cincinnati 10' x 135 ton
(1) Cincinnati 14' x 350 ton
(1) Cincinnati 12' x 175 ton

SHEARS

(1) Accushear 12' x 1/4"

BURN TABLES

(1) Mg Hy Definition 7' x 15' – Cut Capacity of 1 1/2" Plate

LASER TABLE LASER WELDER

Mitsubishi 6k Fiber-Optic 6' x 12' -- Cut Capacity of 1/2" Plate
IPG Photonics LightWELD XR

SAWS

Hyd. Mech 16" Round with 50 Degree Miter
Hyd. Mech 12" Round With 50 Degree Miter
(2) Bailiegh 9" Round With 60 Degree Miter
(2) Doringer Cold Saws -- 4" Solid Bar Max Capacity

IRONWORKERS

Geka – 6 x 6 x 1/2" Angle Cut
Pirahna P3

MILLS

(2) Bridgeports
Regular Drill Big – 1 1/2" Thick
Jancy Bit – 3" Thick
Bore Bit – 14" Thick

TANK TURNING ROLL

Webb: (2) 12" Rd To 16' Rd Diameter – 50,000 Lbs Capacity
Webb: (1) 3" To 96" Rd Diameter – 6,000 Lbs Capacity

WELD POSITIONERS

Profax: (1) 24 1/2" Rd Diameter
With 0-135 Degree Angle - 1,750 Lbs Capacity

FACILITIES

CEDAR RAPIDS

ROBINS ROAD LOCATION

SHOP	30,000 Sq Ft Shop (<i>Hook Height 17'-3"</i>) <ul style="list-style-type: none">(3) 1 ton Overhead Cranes(4) 1 ton Jib Cranes(1) 10 ton Overhead Crane with 5 ton Aux Crane(5) 5 ton Overhead Cranes(1) 5 ton Overhead Crane with 5 ton Aux Crane
PAINT BOOTH	2000 Sq Ft Paint Facility with 1 ton Overhead Crane
STORAGE	4,000 Sq Ft Cold Storage Building
OFFICE SPACE	8,000 Sq Ft

B AVE LOCATION

SHOP	71,500 Sq Ft Shop (<i>25,000 Sq Ft High Bays, Hook Height 33'-0"</i>) Overhead Cranes <ul style="list-style-type: none">(1) 60 ton(3) 50 ton(2) 20 ton(2) 10 ton(4) 5 ton Jib Cranes <ul style="list-style-type: none">(6) 2 ton(5) 3 ton
PAINT BOOTH	1200 Sq Ft Paint Booth with 6 ton Pneumatic Crane

QUAD CITIES

SHOP	20,000 Sq Ft Shop <ul style="list-style-type: none">(1) 10 Ton Overhead Crane(6) 2 Ton Jib Crane
STORAGE	5 Acres Outside Laydown Space
OFFICE SPACE	4,000 Sq Ft

CAPABILITIES

HVAC

COIL LINE

Iowa Precision Full Coil Line

BURN TABLES

(2) Retro 5' x 10' – Cut Capacity of 3/4" Plate

LASER TABLES

Bodor 6KW Fiber Laser 6' x 12' – Cut Capacity of 1/2" Plate

KOOLDUCT/ THERMDUCT

KD3Z CNC Router Table 4' x 13'
KD400 Straight Duct Machine
Thermaduct Bender 13' long

ROLL FORMING

(1) Roper Whitney 4' x 16 ga.
(1) New Dimension 5' x 10 ga.

PRESS BRAKE

(1) Diacro 12' x 175 ton
(1) Whitney Autobrake 10' x 14 ga.
(1) Cincinnati 10' x 135 ton

SHEAR

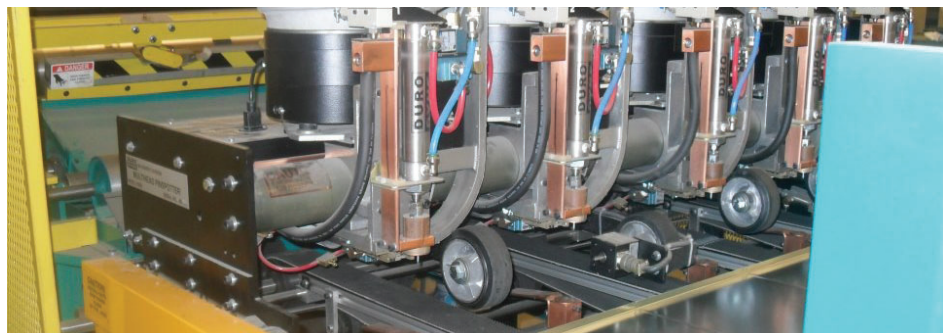
(1) Wysong 10' x 10 ga.
(1) Lodge & Shipley 10' x 10 ga.

IRONWORKER

Piranha P50

COMPONENT

Engel 5' Power Seamer
Corner Matic
Drive Turners (Power & Hand)
Iowa Precision Conduit Machine



CAPABILITIES

TECHNOLOGY

INDUSTRIAL CAD

Autodesk AutoCAD with Qualified CAD Operators
Autodesk Inventor with Qualified CAD Operators

HVAC CAD

Trimble East Coast CAD/ Autodesk MEP w/ Qualified CAD Operators
Autodesk Points Software

BIM CAPABILITIES

Autodesk Navisworks BIM Collision Checking

TOTAL STATION

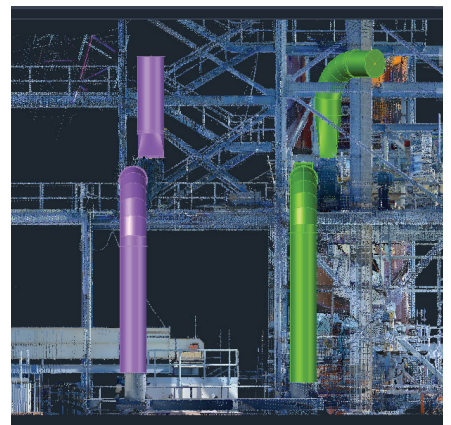
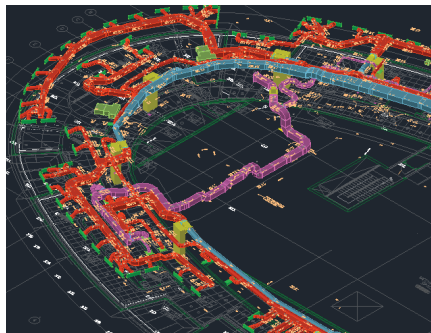
MEP automated layout system to fast-track installation of hanger systems. Points from CAD are directly downloaded to total station and sent to the field to locate each hanger point for install either above or below the floor, roof or decking.

3D SCANNER

State-of-the-art 3D scanner that is powerful, precise, fast processing scanning action to gather all the data that is needed for an as built, or building a renovation model. We can quickly capture, analyze, and model whatever the job may be.

ESTIMATING

QuoteSoft Estimating software that quickly calculates jobs to provide customers with accurate estimates.



CAPABILITIES

WELDS & MATERIALS

WELDING PROCESS

MIG
TIG
Stick
Submerged Arc
Plastic

CERTIFIED WELDERS

ITI & AWS Certified Welders On Staff

WELD TESTING

DYE
X-RAY (Off-Site Vendor)

WELD CLEANING

As Required Per Specification

STANDARD IN STOCK MATERIALS

Stainless Steel
Carbon Steel
Aluminum
Galvanized

SPECIALTY MATERIALS

AR 200*
AR 400*
T1A*
Ceramic Tile (1/4" & 1/2")*
Rhinohyde*
Hastelloy C276
Stainless 309, 310, 317
Fiberglass
High Temperature Flex and Expansion Connections

* always kept in stock

CAPABILITIES

PAINTING

PAINT PROCESS USED

Kremlin AIR Assist Sprayer

APPLICATIONS

Epoxy
Enamel
Cold Galvanizing
High Temperature Painting – Up to 800 Degrees



TRUCKING FLEET

5th Wheel Trucks (44', 40' & 35' options)

JLG's

Stake Trucks (8' to 24' options)

Scissor Lifts

24' Enclosed Cube Vans

Connex Boxes (20' & 40' available)

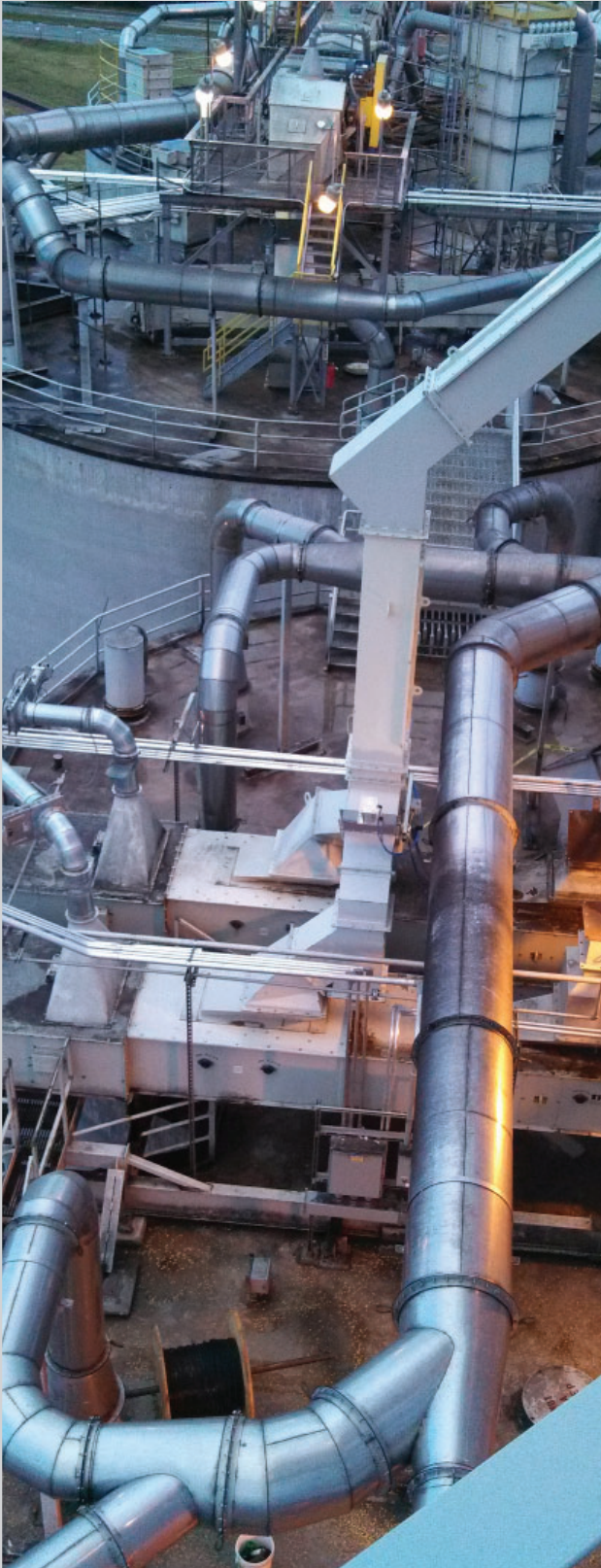


INDUSTRIAL PROJECTS

INDUSTRIAL BAGHOUSE & DUST COLLECTION SYSTEM



SPOUTING



HOPPER



REGENERATIVE THERMAL OXIDIZER (RTO)



TANKS



CUSTOM RAIL CAR HOOD



DUST COLLECTION



INDUSTRIAL DUCT WORK

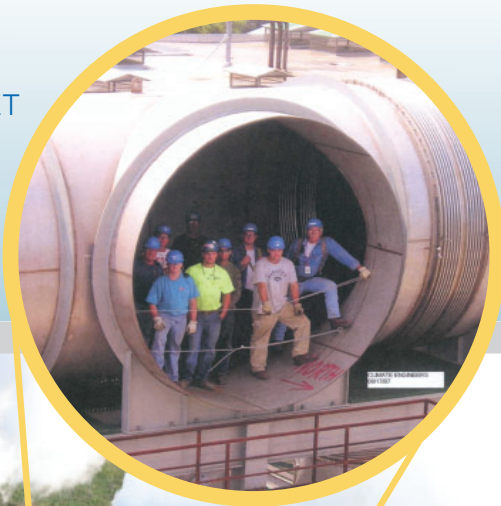


HOPPER



RTO PROJECT

12' DIAMETER
275 LINEAR FEET



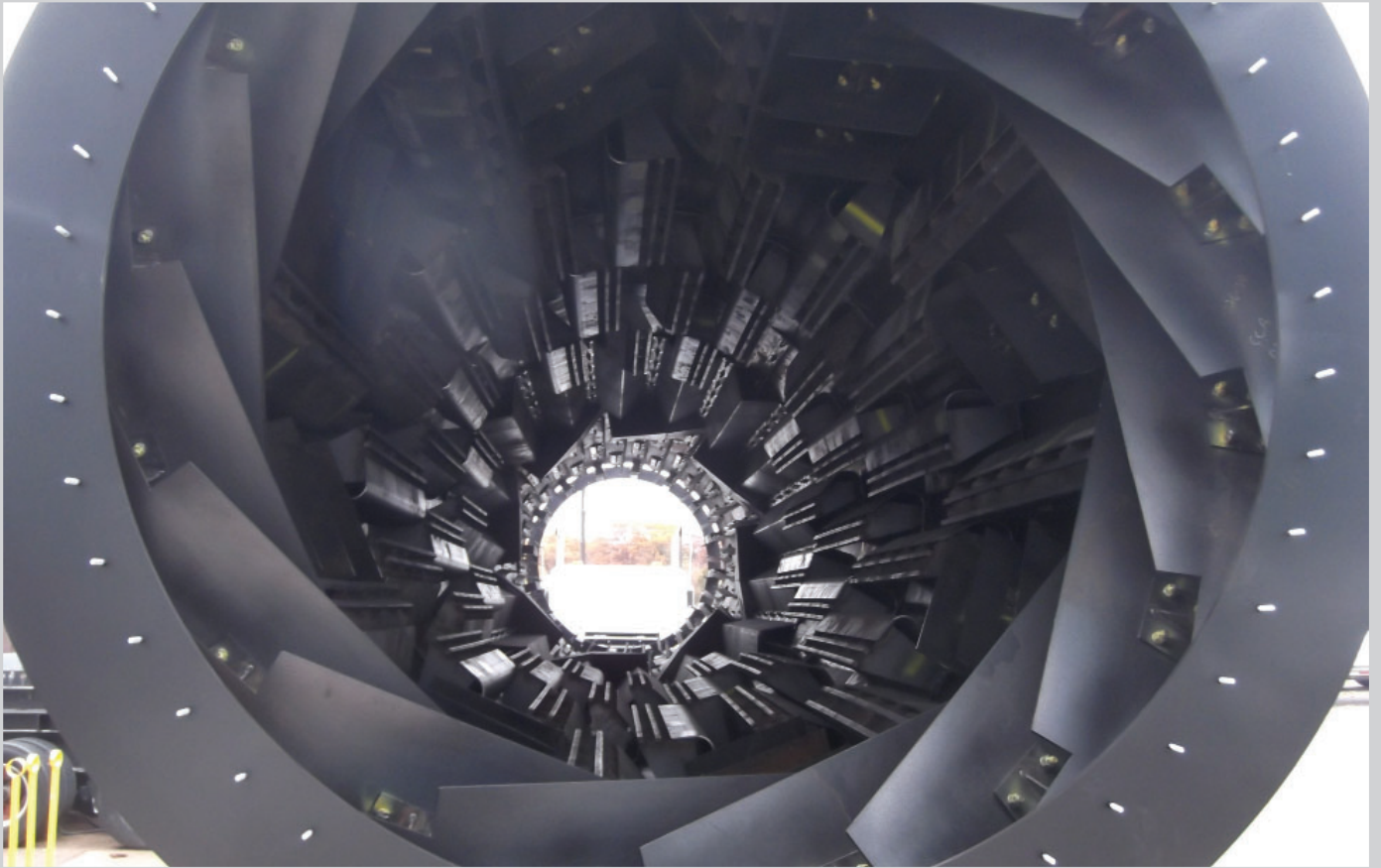
7' DIAMETER
152' STACK

10' DIAMETER
152' STACK

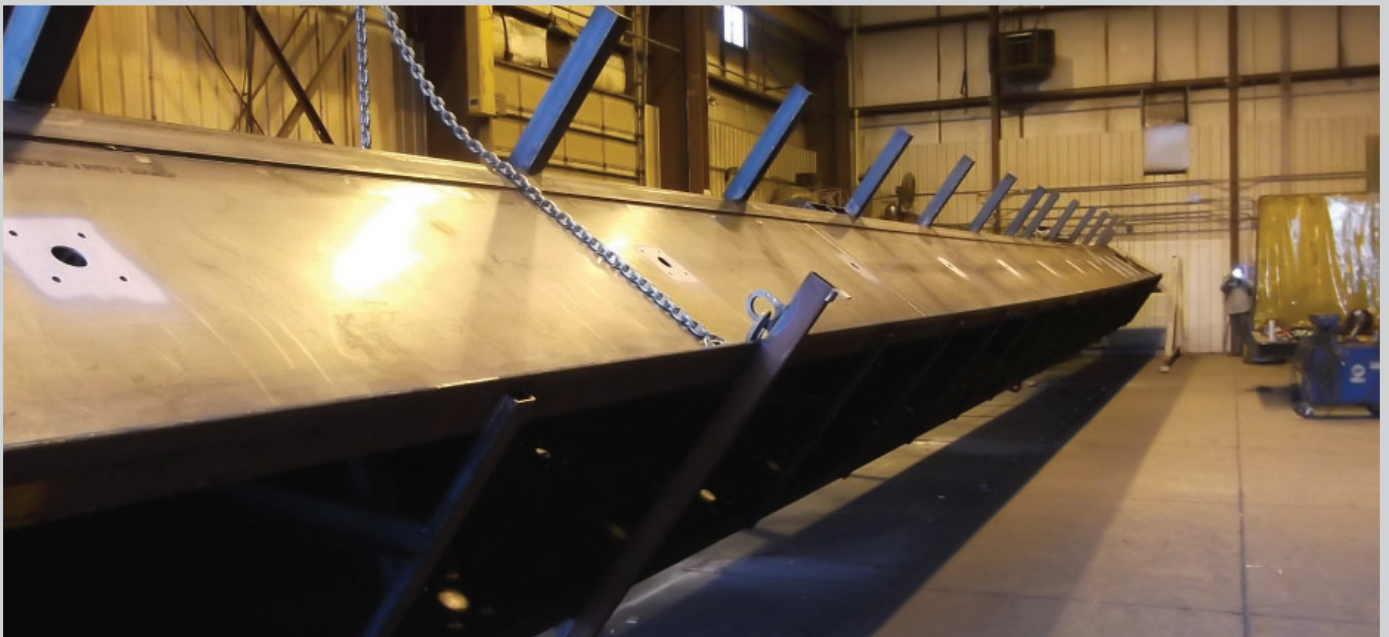
10' DIAMETER
152' STACK

MANUFACTURING PROJECTS

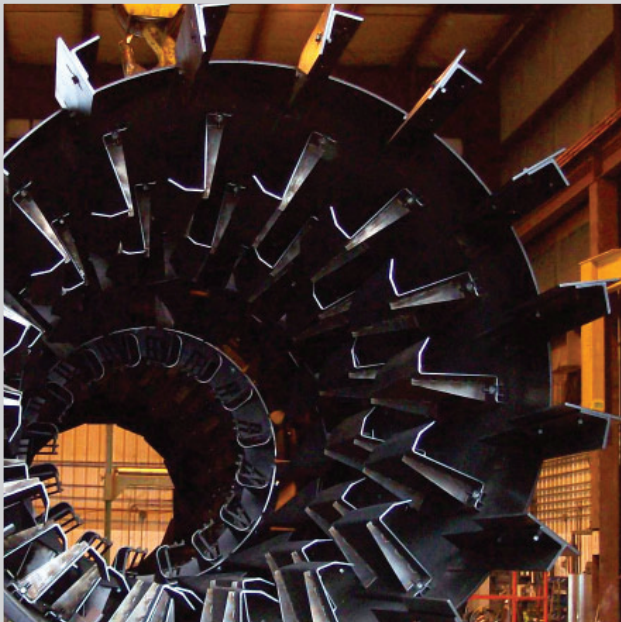
DRYER DRUM



CONVEYOR



DRYER DRUM



HOPPER



ROAD MIX MACHINE



PORTABLE CONCRETE SILO



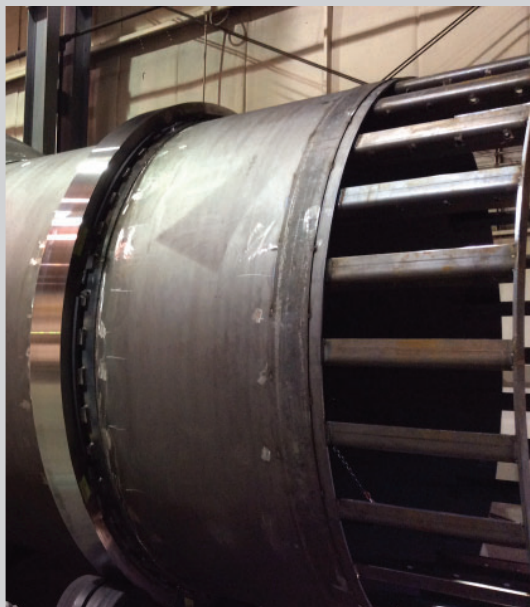
SELF ERECTING STORAGE SILO



SILO



DRUMS



HVAC

heating, ventilation,
& air conditioning

DUCTWORK



- Healthcare
- Office Buildings
- Dealerships
- Educational
- Industrial Plants



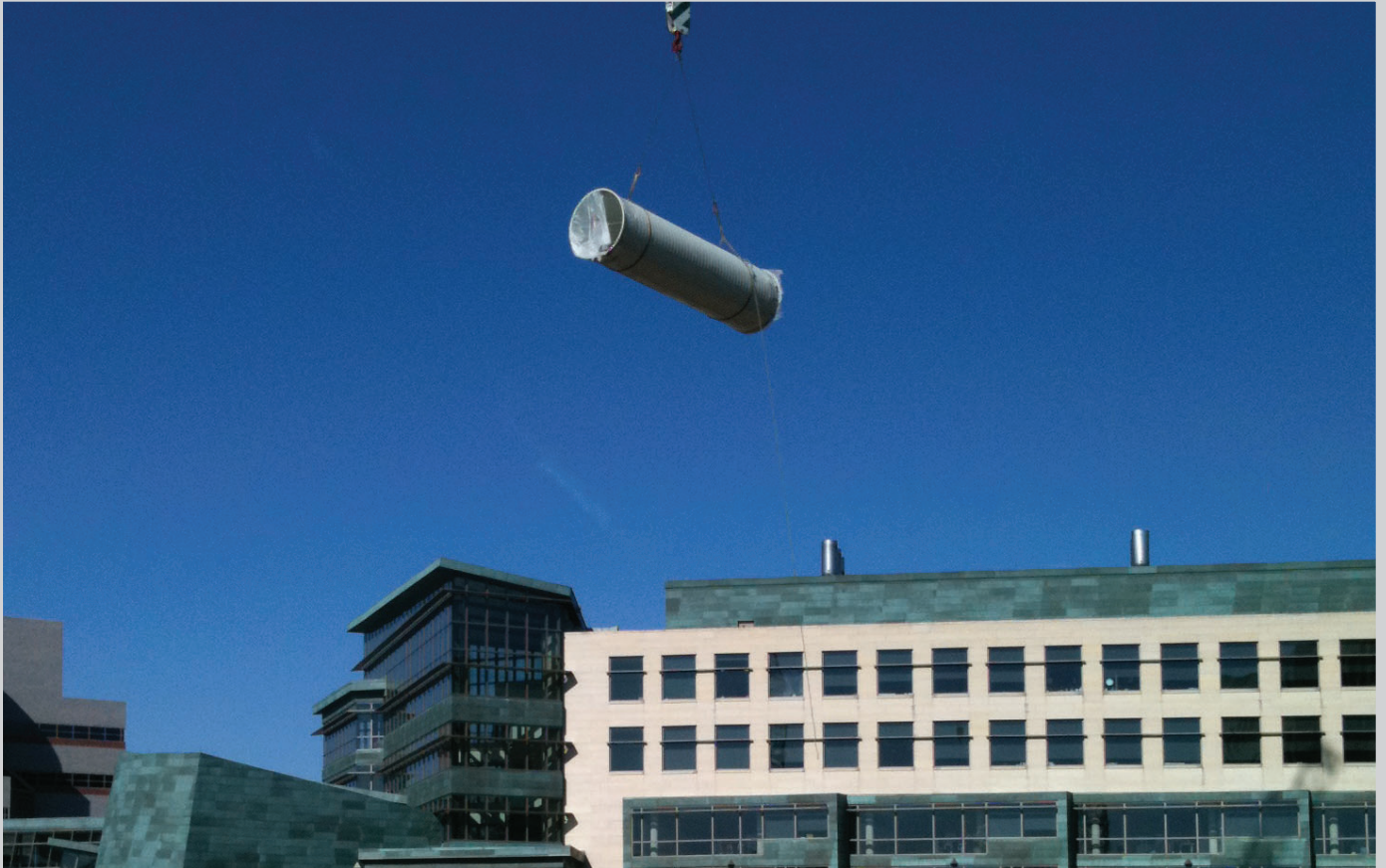
MECHANICAL ROOM DUCTWORK



EXPOSED & ROOF DUCTWORK



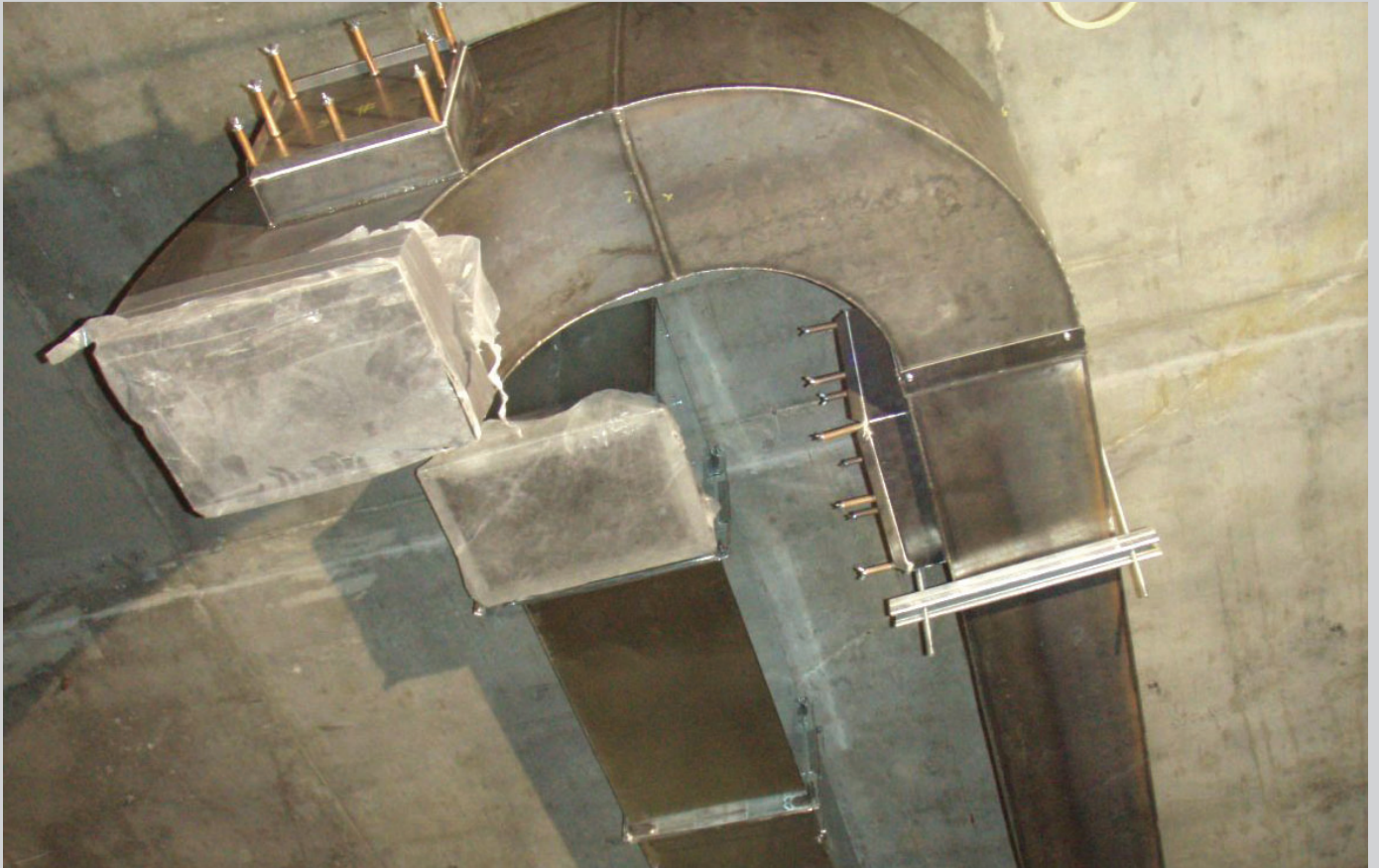
UNDERGROUND DUCTWORK



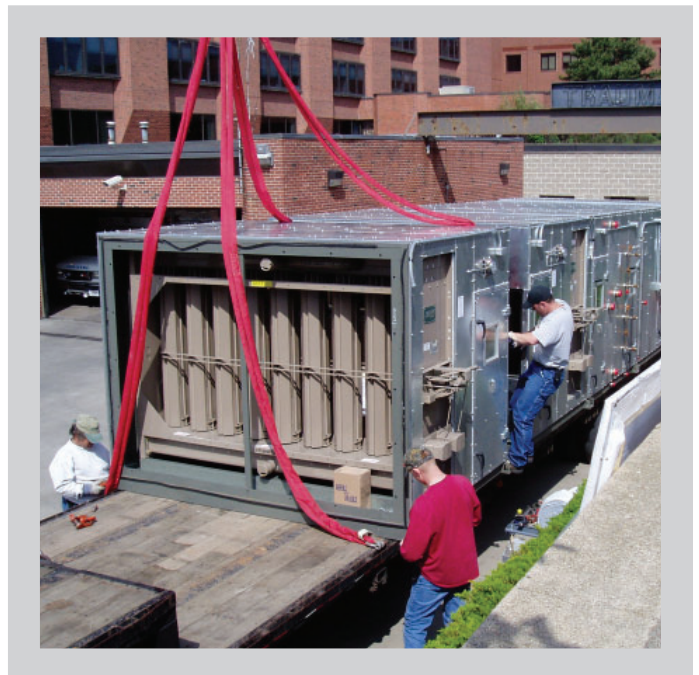
EQUIPMENT INSTALLATION



GREASE DUCTS



CUSTOM AIR HANDLING UNIT INSTALLATION



CUSTOM AIR HANDLING UNITS by CLIMATE ENGINEERS



SERVICE

- Emergency Services — 24/7/365
- Preventative Maintenance
- Controls Solutions
- Unit Replacement
- Certified Technicians

**AMERICAN
AUTO-MATRIX®**



THERMADUCT



KOOLDUCT

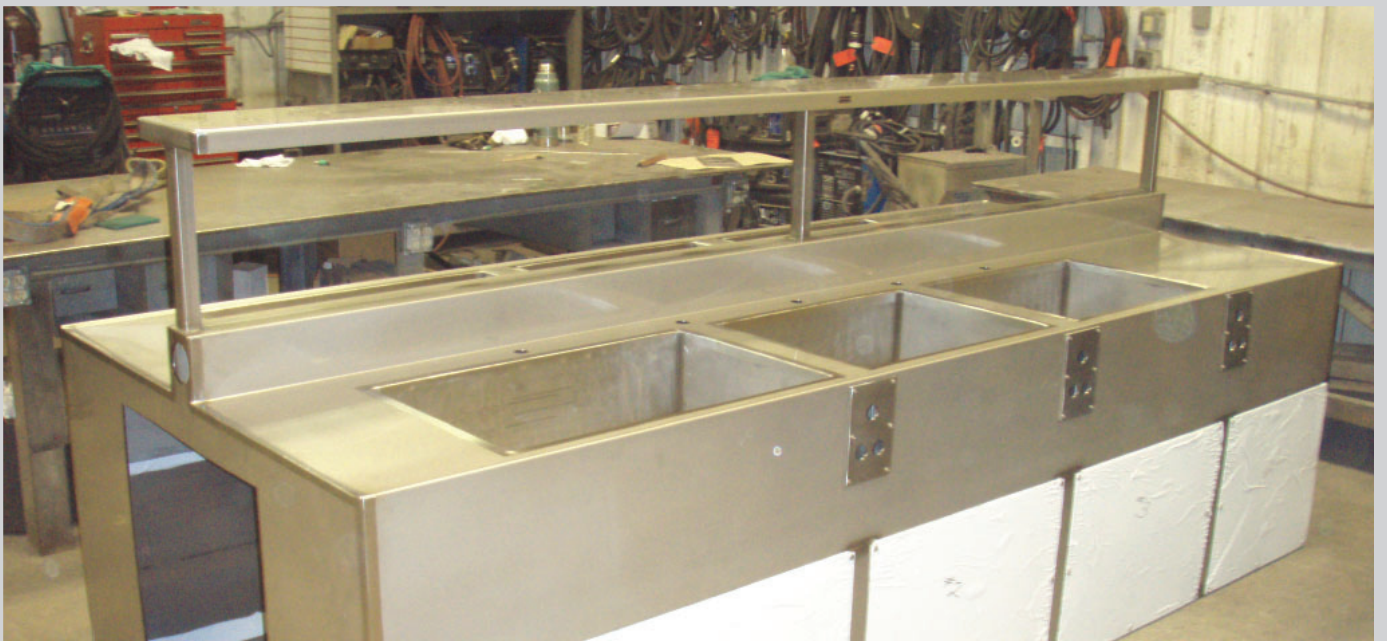


ThermaRound

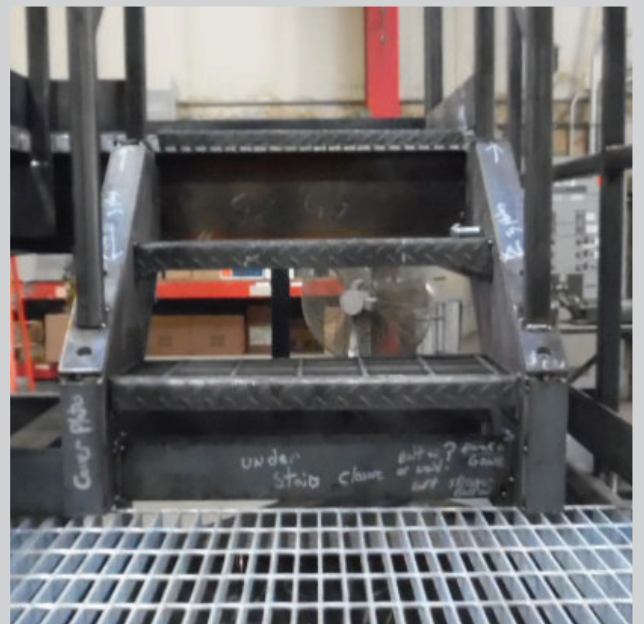


SPECIALTY PROJECTS

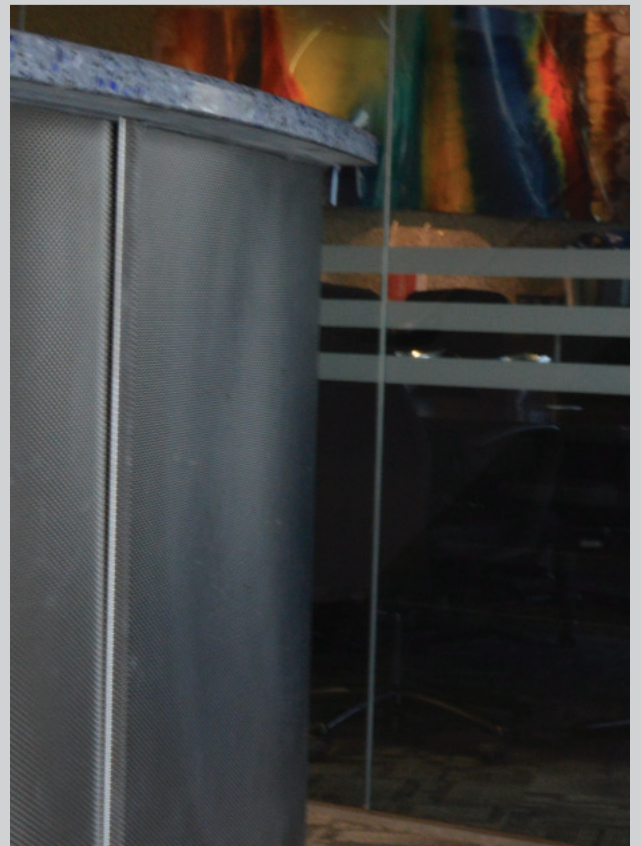
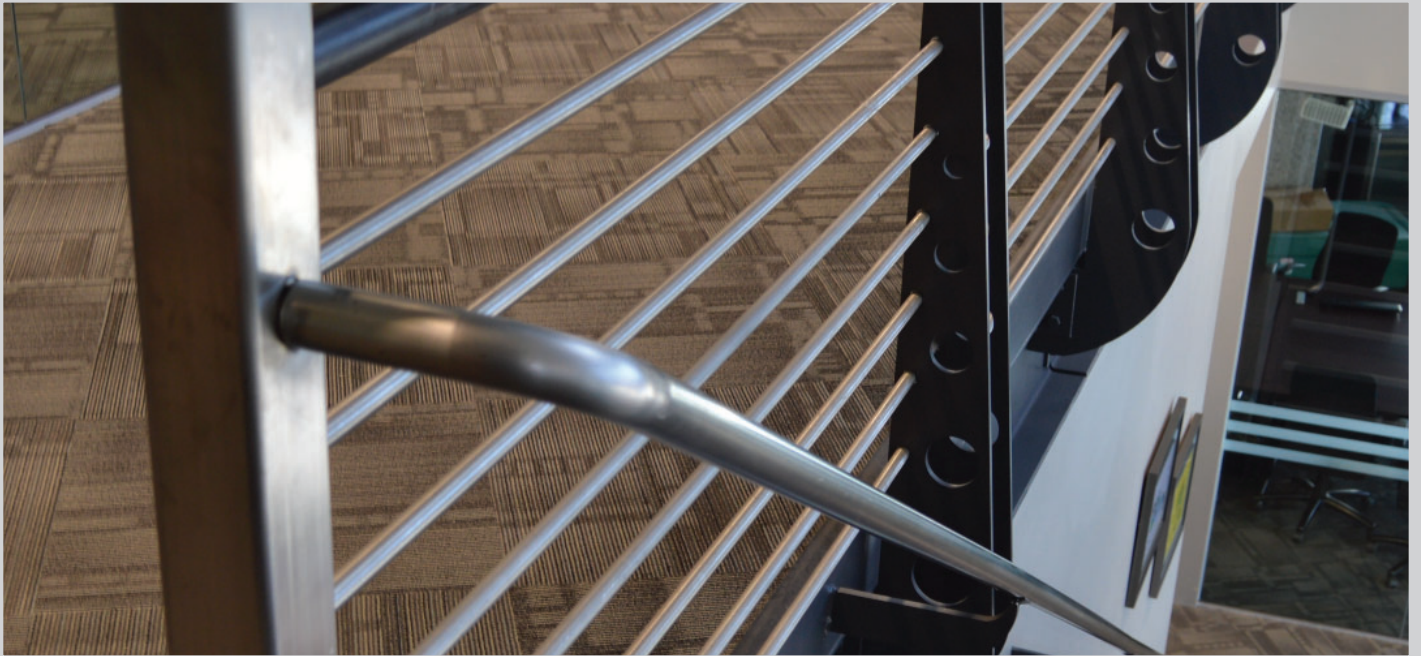
CUSTOM STAINLESS STEEL SINK



CUSTOM PLATFORMS & STAIRS



CUSTOM FLASHING & HANDRAILS

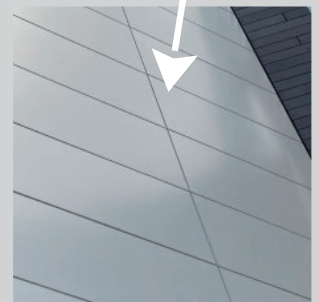


ARCHITECTURAL PROJECTS

GFCR PANELS



ALUMINUM ARCHITECTURAL PANELS



ALUMINUM ARCHITECTURAL PANELS



ALUMINUM ARCHITECTURAL PANELS



ALUMINUM ARCHITECTURAL PANELS

